



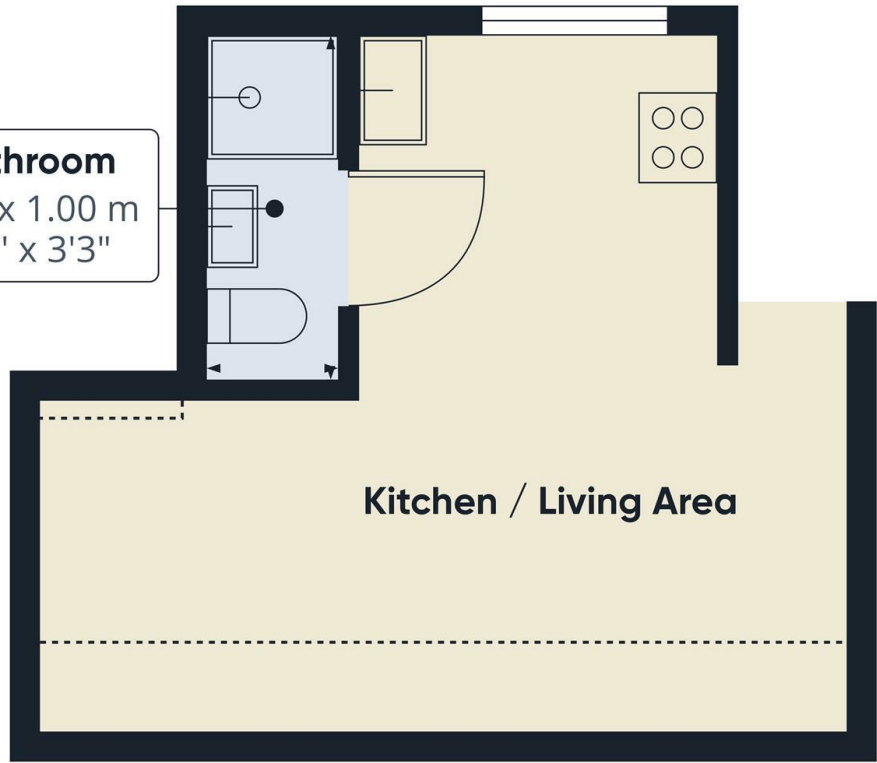
High Road, London, N12 0AP

£1,200 PCM

- Top floor studio apartment
- Council tax - Band A
- En suite shower room
- Available from 18th December 2024
- Modern fitted kitchen with appliances
- Single occupants only
- Laminate wooden flooring
- WATER RATES INCLUDED IN THE RENT
- Electric heating
- Unfurnished



Bathroom
2.35 x 1.00 m
7'8" x 3'3"



Kitchen / Living Area

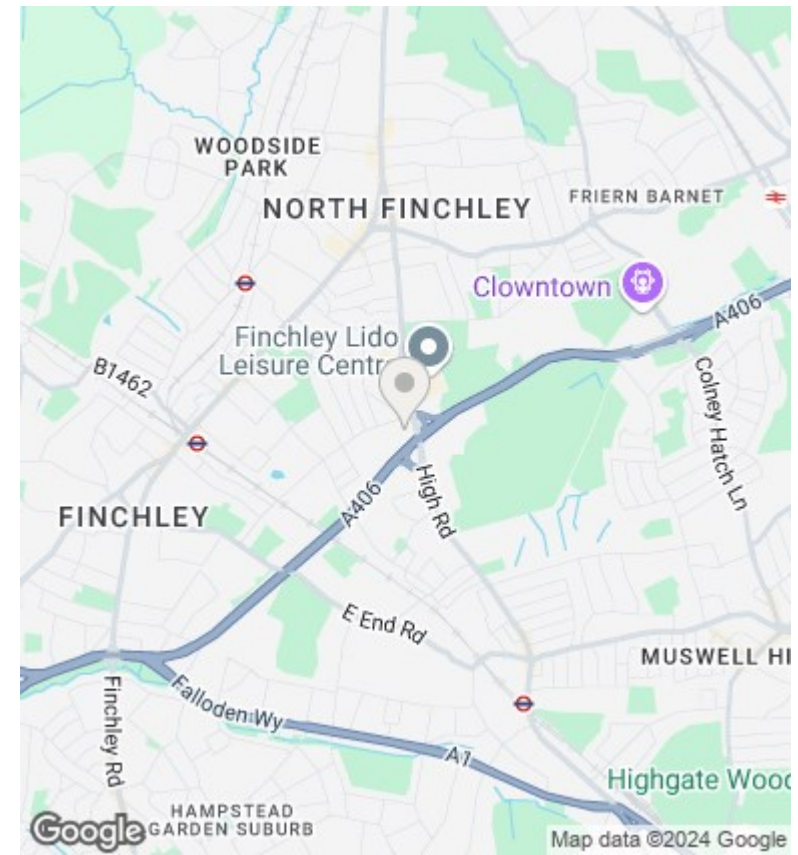
Approximate total area⁽¹⁾
2.33 m²
25.08 ft²

(1) Excluding balconies and terraces

Reduced headroom
----- Below 1.5 m/5 ft

While every attempt has been made to ensure accuracy, all measurements are approximate, not to scale. This floor plan is for illustrative purposes only. Calculations are based on RICS IPMS 3C standard.

GIRAFFE360



Directions

Viewings

Viewings by arrangement only. Call 02083499000 to make an appointment.

Council Tax Band

A

EPC Rating:

B

Energy Efficiency Rating

	Current	Potential
Very energy efficient - lower running costs		
(92 plus) A		
(81-91) B	82	84
(69-80) C		
(55-68) D		
(39-54) E		
(21-38) F		
(1-20) G		
Not energy efficient - higher running costs		
England & Wales	EU Directive 2002/91/EC	