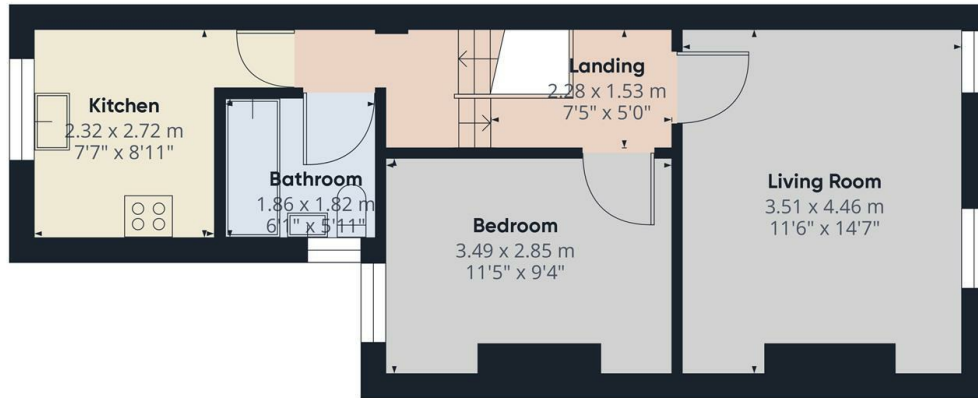




West Road, Stratford, E15 3PX

£1,350 Per Month

- 1st Floor 1 bedroom conversion
- Gas central heating
- Unfurnished
- Neutral decor
- Double glazed
- Available now
- Newly laid carpet throughout
- Council Tax Band B (Newham)
- Easy access to Plaistow Station

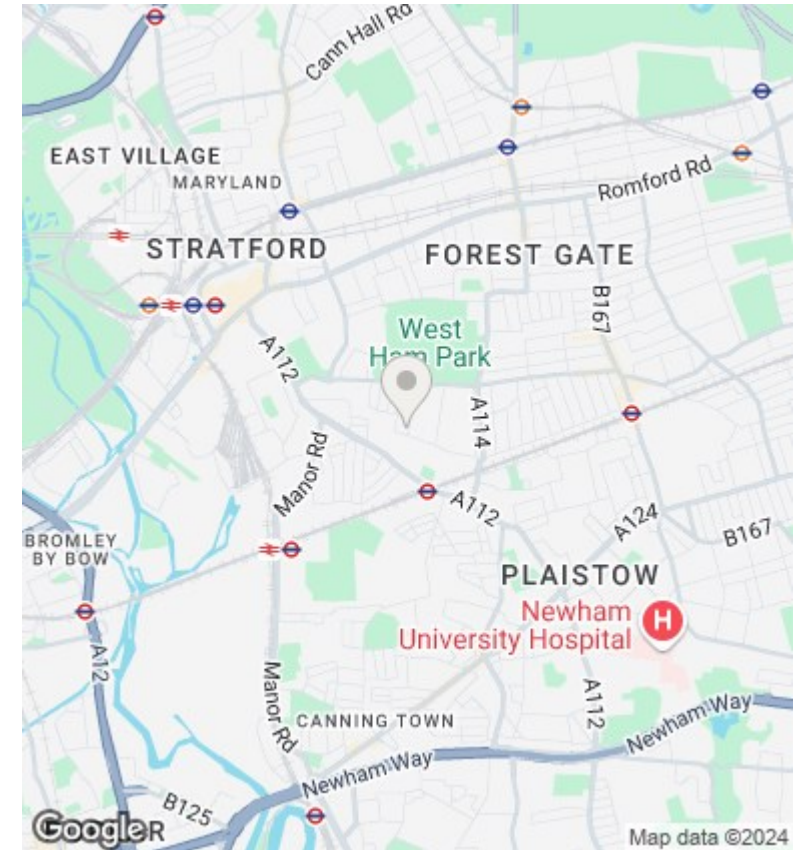


Approximate total area⁹
40.23 m²
433.03 ft²

(1) Excluding balconies and terraces

While every attempt has been made to ensure accuracy, all measurements are approximate, not to scale. This floor plan is for illustrative purposes only. Calculations are based on RICS IPMS 3C standard.

GIRAFFE360



Directions

Viewings

Viewings by arrangement only. Call 02083499000 to make an appointment.

Council Tax Band

B

EPC Rating:

C

Energy Efficiency Rating		
	Current	Potential
<i>Very energy efficient - lower running costs</i>		
(92 plus) A		
(81-91) B		
(69-80) C	73	78
(55-68) D		
(39-54) E		
(21-38) F		
(1-20) G		
<i>Not energy efficient - higher running costs</i>		
England & Wales	EU Directive 2002/91/EC	