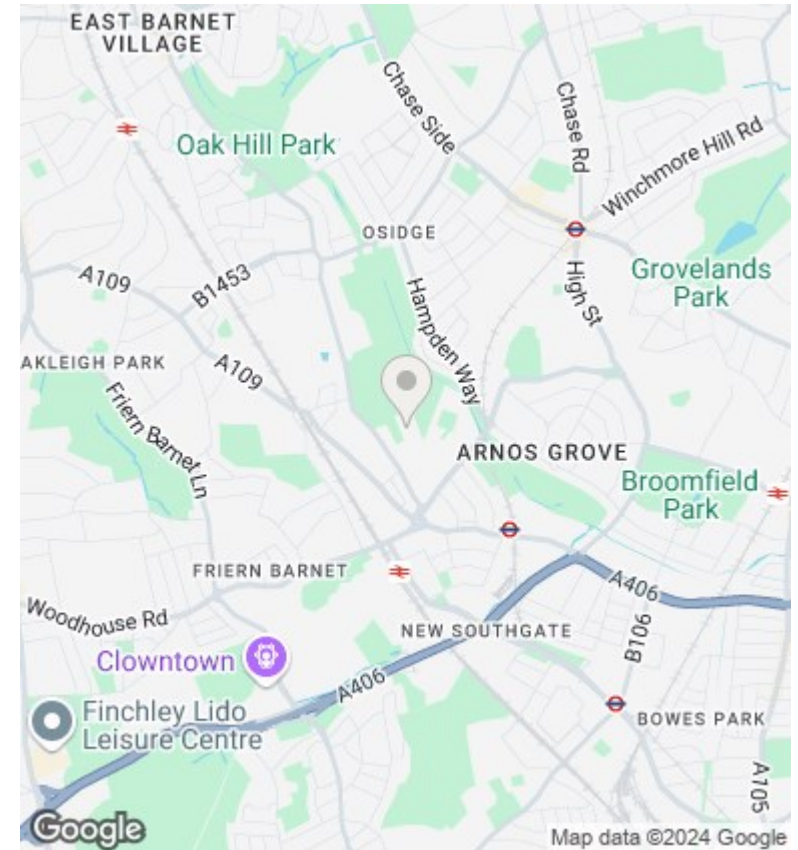
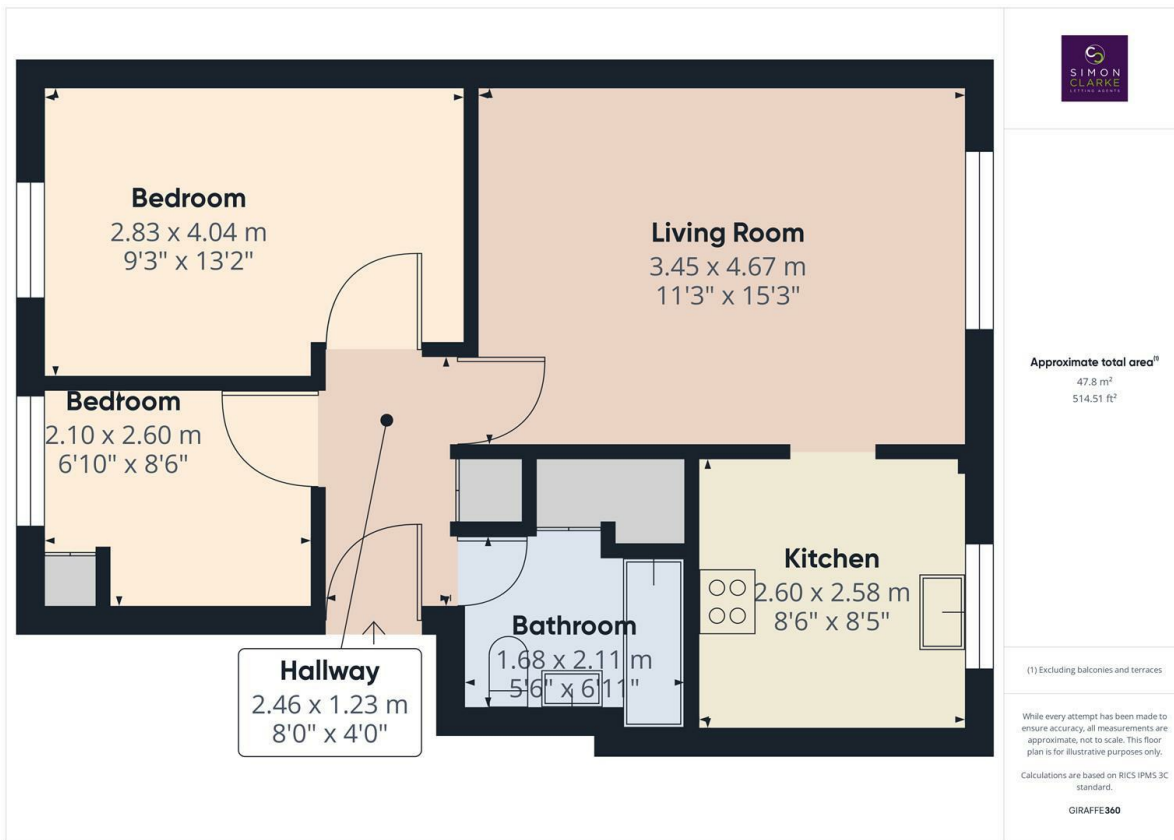




## Marshalls Close, London, N11 1TD

£1,550 PCM

- 2 Bedroom 1st floor apartment in purpose built block
- Secure entry phone system
- Available on long term tenancy (initial 12 months)
- Available from 30th November 2024
- Spacious lounge leading into a semi-open plan kitchen
- Off street parking
- Council tax band C
- Both bedrooms with fitted wardrobes
- 10 minute walk to Arnos Grove Tube Station
- Furnished or unfurnished



## Directions

## Viewings

Viewings by arrangement only. Call 02083499000 to make an appointment.

## Council Tax Band

C

## EPC Rating:

C

