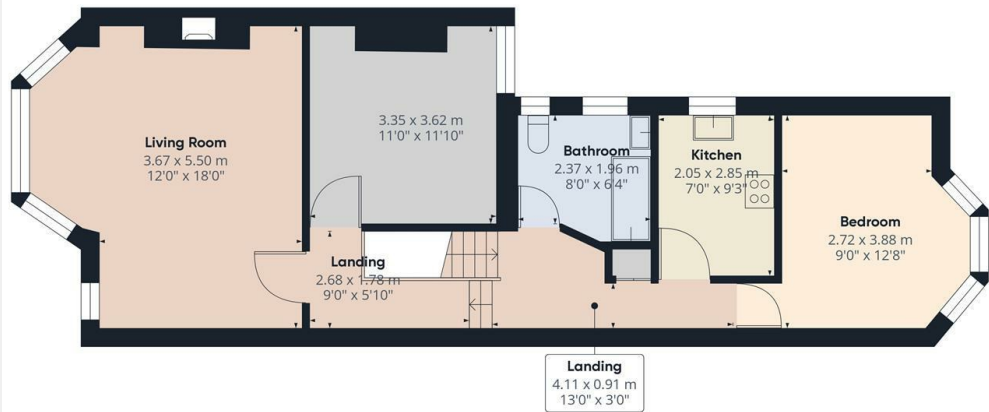




Princes Avenue, London, N3 2DB

£1,725 PCM

- 2 double bedroom apartment
- Attractive 3 piece bathroom suite
- Unfurnished
- Council tax band D - £1,943.24pa
- Fitted carpets throughout
- Modern fitted kitchen with appliances
- Available for long term tenancy (initial 12 months)
- Spacious 18' x 16' lounge with attractive feature bay
- Gas central heating / double glazing
- Available From 21st September 2024



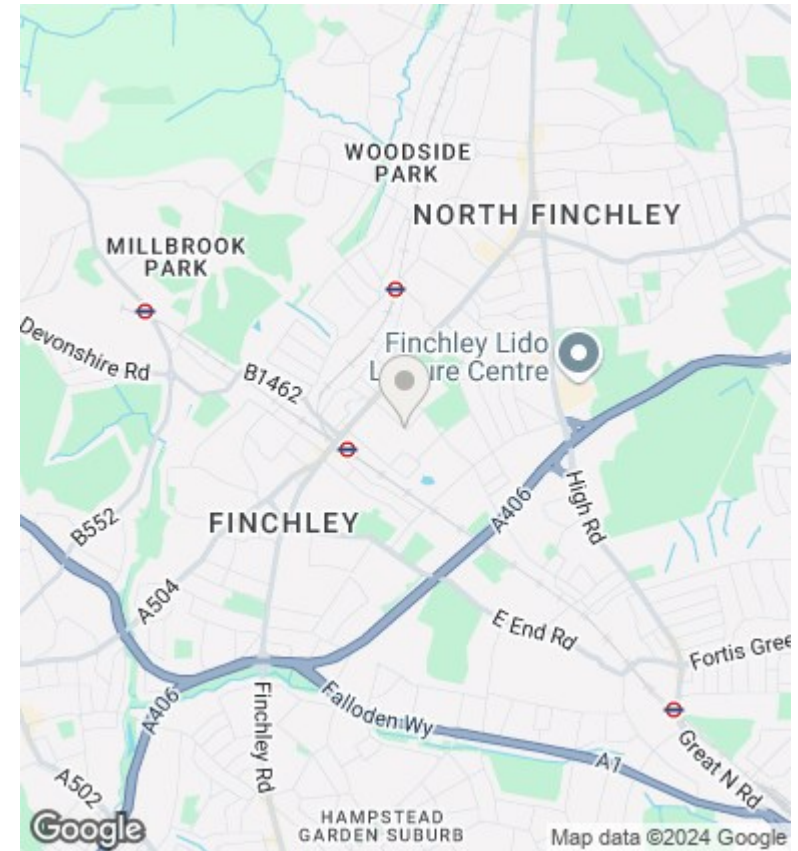
Approximate total area*
68.27 m²
734.85 ft²

(*) Excluding balconies and terraces

While every attempt has been made to ensure accuracy, all measurements are approximate, not to scale. This floor plan is for illustrative purposes only.

GIRAFFE360

Floor 1



Directions

Viewings

Viewings by arrangement only. Call 02083499000 to make an appointment.

Council Tax Band

D

EPC Rating:

D

Energy Efficiency Rating		
	Current	Potential
<i>Very energy efficient - lower running costs</i>		
(92 plus) A		
(81-91) B		
(69-80) C		
(55-68) D	61	65
(39-54) E		
(21-38) F		
(1-20) G		
<i>Not energy efficient - higher running costs</i>		
England & Wales	EU Directive 2002/91/EC	