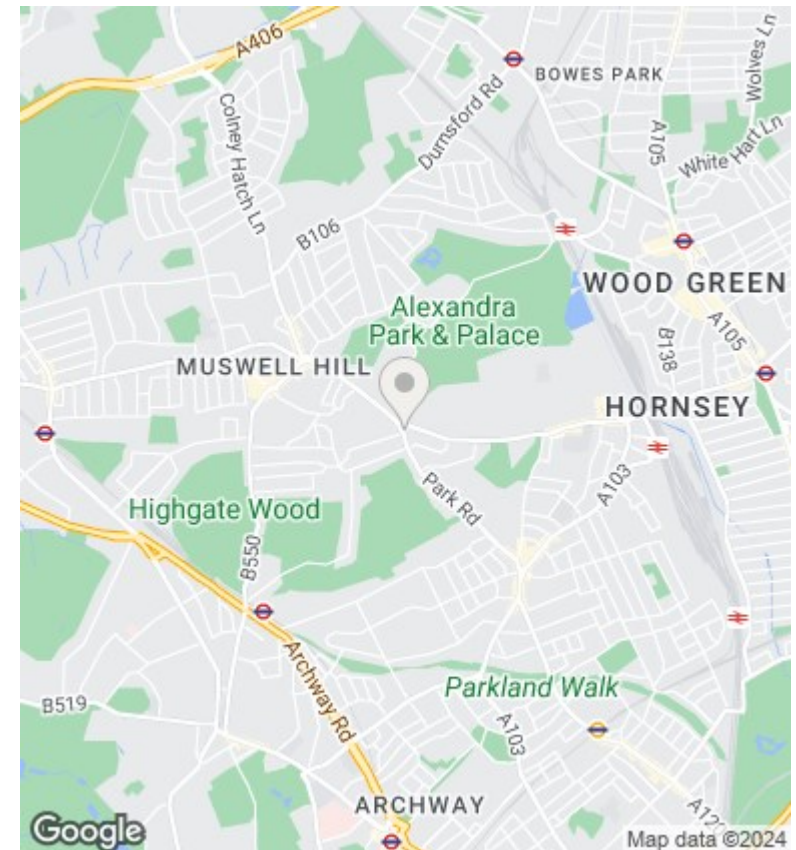
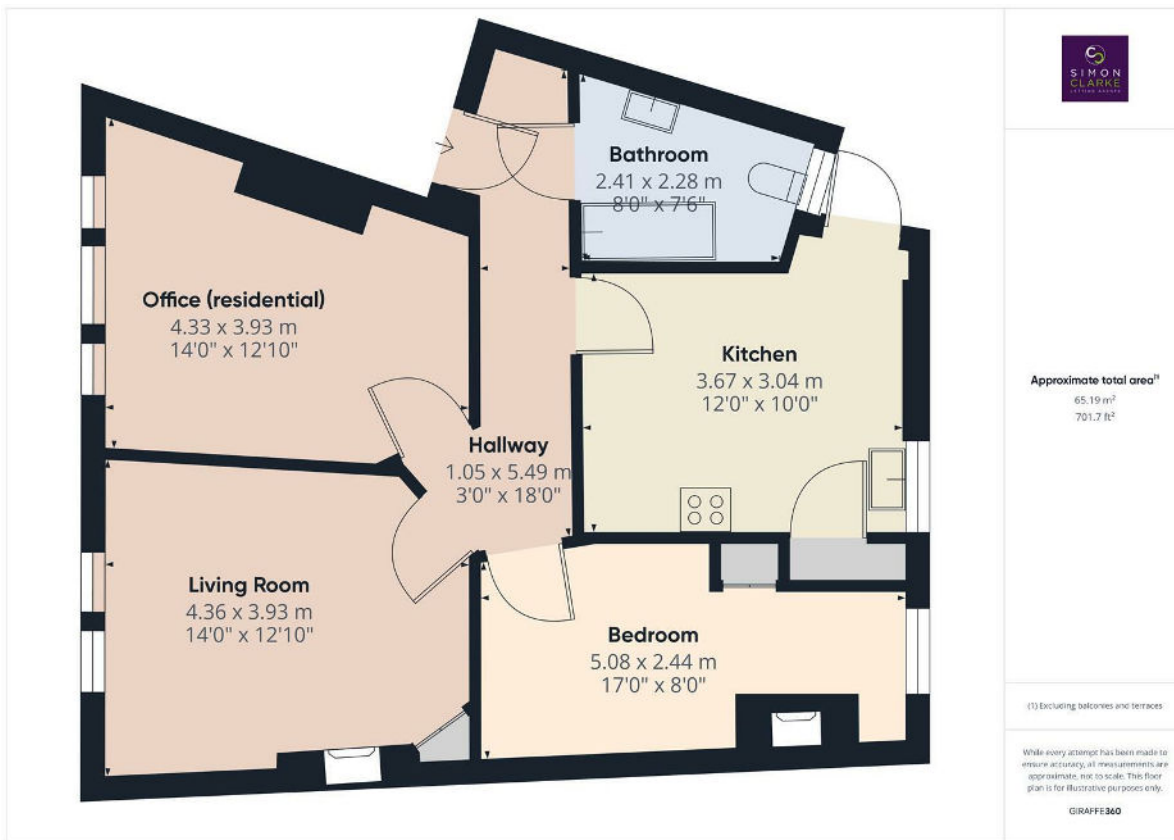




Park Road, London, N8 8LA

£1,725 PCM

- 2 Bedroom flat above commercial premises
- Close to Priory Park
- Intercom door entry
- Available from 24th September 2024
- Fitted Kitchen with appliances
- Fitted carpets throughout
- Available for long term tenancy - initial 12 months
- Close to Muswell Hill & Crouch End vast array of shops and amenities
- Council Tax band C - £1,873.18 per annum
- Unfurnished / this property is not suitable for sharers



Directions

Viewings

Viewings by arrangement only. Call 02083499000 to make an appointment.

Council Tax Band

C

EPC Rating:

D

