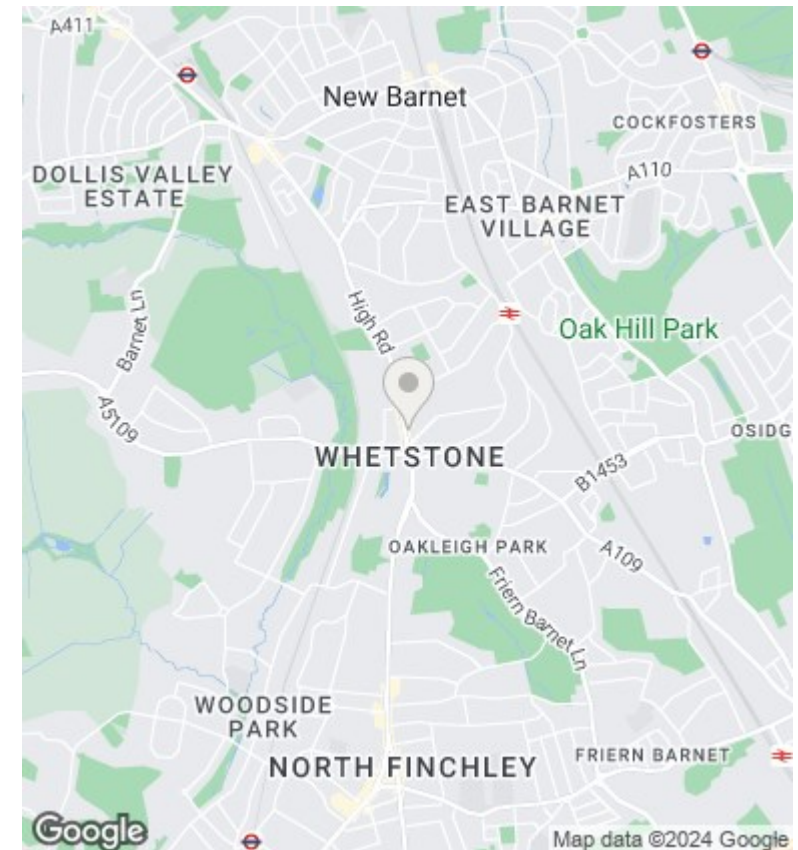
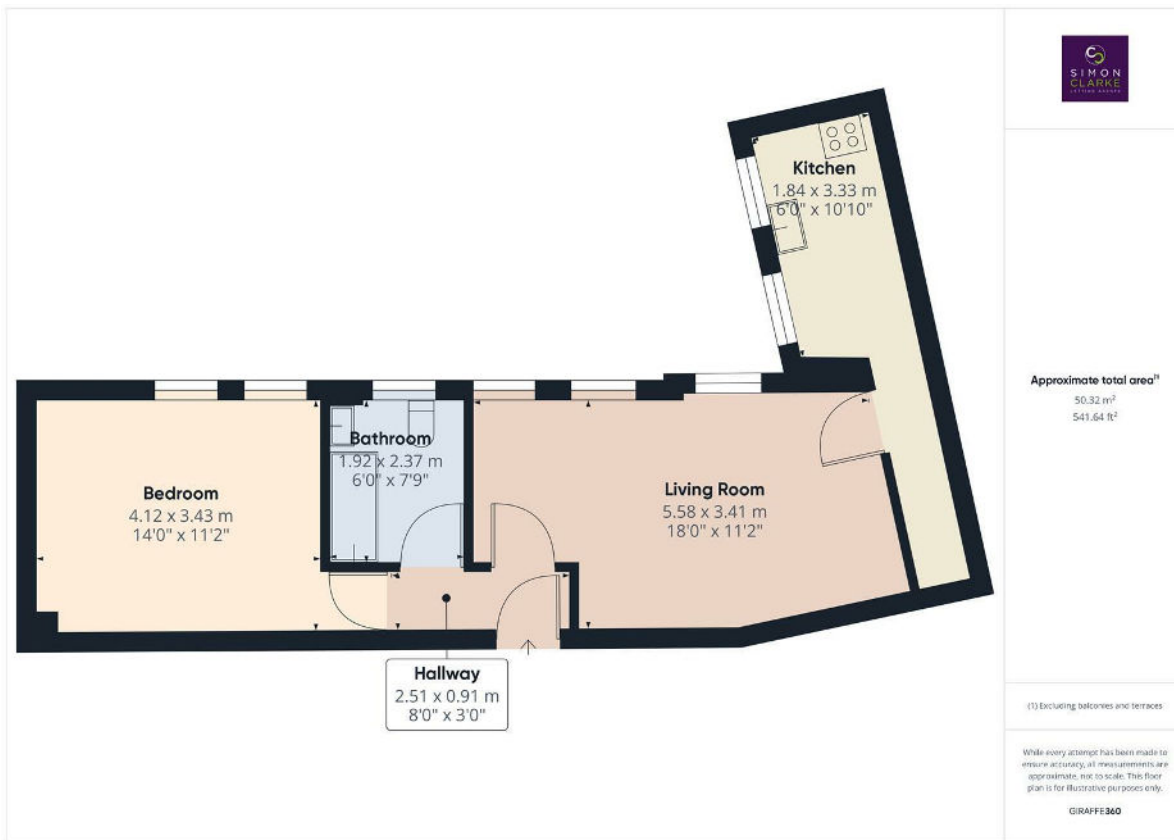


High Road, London, N20 9HJ

£1,430 Per Calendar Month

- Managed by Simon Clarke Letting Agents
- Gas central heating & double glazing
- Available on a long term tenancy (initial 12 month tenancy)
- Available from 14th September 2024
- Located in the heart of Whetstone N20
- Vast array of shops and supermarkets on doorstep
- Unfurnished
- Close proximity to Totteridge / Whetstone Tube Station & Oakleigh Park BR Station
- Large double bedroom with fitted wardrobes
- Council tax band C - £1,727.32pa



Directions

Viewings

Viewings by arrangement only. Call 02083499000 to make an appointment.

Council Tax Band

C

EPC Rating:

E

