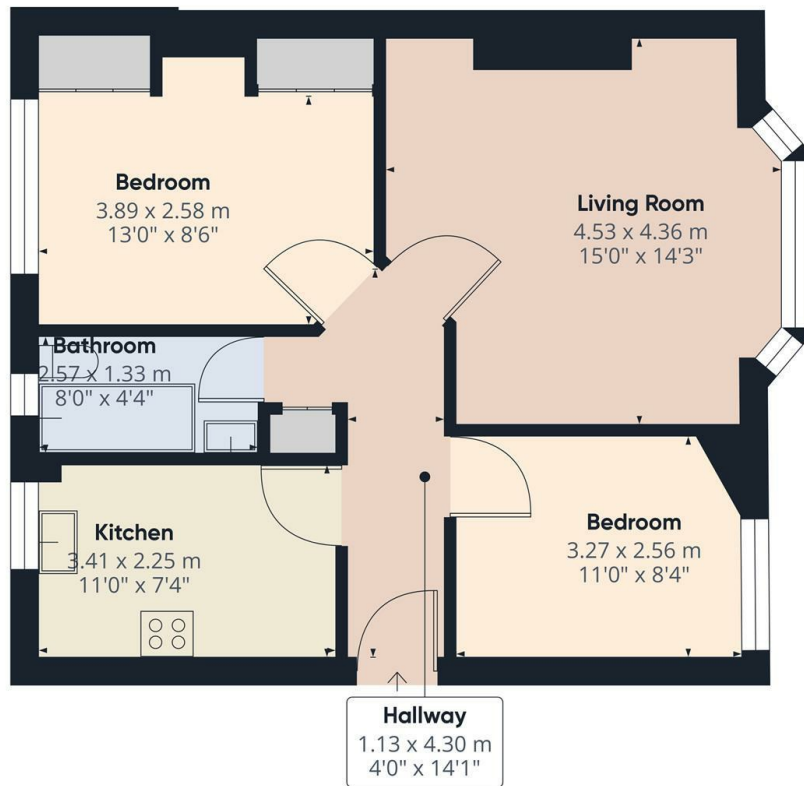




Friern Park, London, N12 9DL

£1,650 Per Calendar Month

- Two double bedroom apartment
- Fitted kitchen with appliances
- Available on long term tenancy (Initial 12 months)
- Available Now
- Spacious lounge with laminate wooden floors
- Tiled 3-piece bathroom suite
- Council tax band C - £1.727.32pa
- Off street parking available
- Fitted wardrobes to master bedroom
- Unfurnished

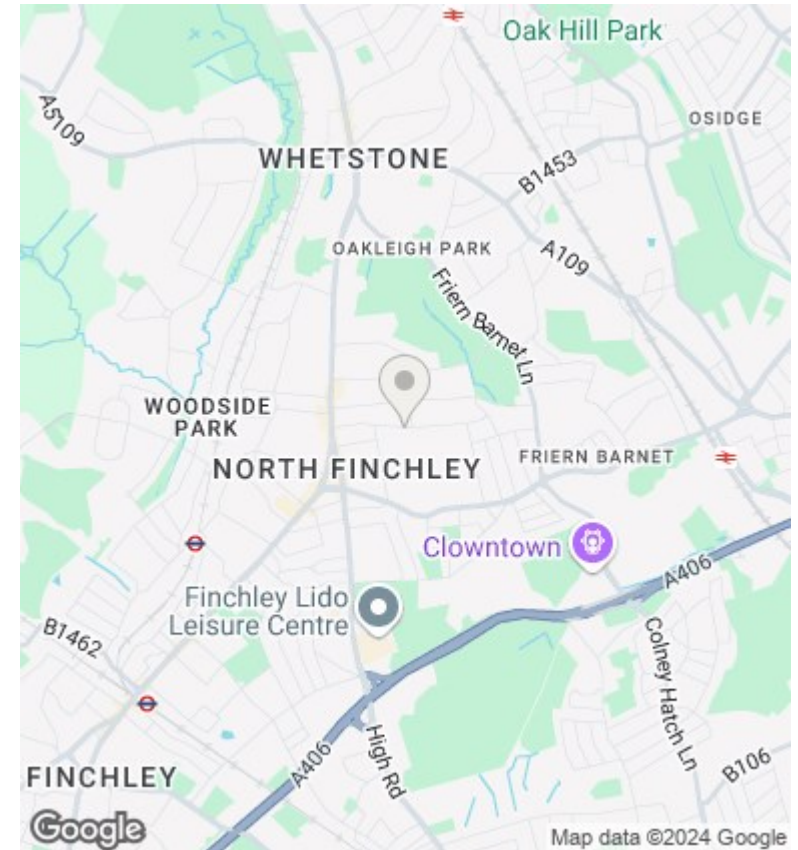


Approximate total area⁽¹⁾
54.22 m²
583.62 ft²

(1) Excluding balconies and terraces

While every attempt has been made to ensure accuracy, all measurements are approximate, not to scale. This floor plan is for illustrative purposes only.

GIRAFFE360



Directions

Viewings

Viewings by arrangement only. Call 02083499000 to make an appointment.

Council Tax Band

C

EPC Rating:

C

Energy Efficiency Rating		
	Current	Potential
<i>Very energy efficient - lower running costs</i>		
(92 plus) A		
(81-91) B		79
(69-80) C	69	
(55-68) D		
(39-54) E		
(21-38) F		
(1-20) G		
<i>Not energy efficient - higher running costs</i>		
England & Wales	EU Directive 2002/91/EC	